



The Sizewell C Project

2.3 Works Plans - Part 1 of 3

January 2021

Planning Act 2008
Infrastructure Planning (Applications: Prescribed Forms and Procedure) Regulations 2009

Revision: 2.0
Applicable Regulation: Regulation 5(2)(j)
PINS Reference Number: EN010012



Works Plans – For Approval

Drawing Number	Revision	Drawing Title	Scale	Sheet Size
Works Plans – Part 1				
SZC-SZ0204-XX-000-DRW-100479	02	Works Plans Overview	1:125000	A1
SZC-SZ0204-XX-000-DRW-100480	02	Works Plans Key Plan 1	1:40000	A1
SZC-SZ0204-XX-000-DRW-100481	02	Works Plans Key Plan 2	1:40000	A1
SZC-SZ0204-XX-000-DRW-100514	01	Works Plans Key Plan 3	1:40000	A1
Works Plans – Part 2				
SZ/WP/01	02	Main Development Site & Rail Works Plans - Key Plan 3	1:10000	A0
SZ/WP/02	02	Main Development Site & Rail Works Plans - Key Plan 4	1:10000	A0
SZ/WP/03	02	Main Development Site & Rail Works Plans - Sheet 1 of 28	1:2500	A0
SZ/WP/04	02	Main Development Site & Rail Works Plans - Sheet 2 of 28	1:2500	A0
SZ/WP/05	02	Main Development Site & Rail Works Plans - Sheet 3 of 28	1:2500	A0
SZ/WP/06	02	Main Development Site & Rail Works Plans - Sheet 4 of 28	1:2500	A0
SZ/WP/07	02	Main Development Site & Rail Works Plans - Sheet 5 of 28	1:3000	A0
SZ/WP/08	02	Main Development Site & Rail Works Plans - Sheet 6 of 28	1:3000	A0
SZ/WP/09	02	Main Development Site & Rail Works Plans - Sheet 7 of 28	1:2500	A0
SZ/WP/10	02	Main Development Site & Rail Works Plans - Sheet 8 of 28	1:2500	A0
SZ/WP/12	02	Main Development Site & Rail Works Plans - Sheet 9 of 28	1:2500	A0
SZ/WP/13	02	Main Development Site & Rail Works Plans - Sheet 10 of 28	1:2500	A0
SZ/WP/14	02	Sports Facilities Works Plans - Sheet 11 of 28	1:1250	A1
SZ/WP/15	02	Fen Meadow - Halesworth Works Plans - Sheet 12 of 28	1:1250	A1
SZ/WP/16	02	Fen Meadow - Benhall Works Plans - Sheet 13 of 28	1:2500	A1
SZ/WP/17	02	Marsh Harrier Habitat Works Plans - Sheet 14 of 28	1:2500	A1

Works Plans – For Approval

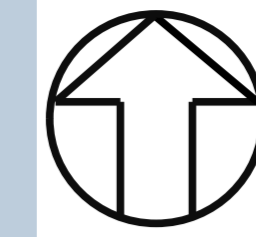
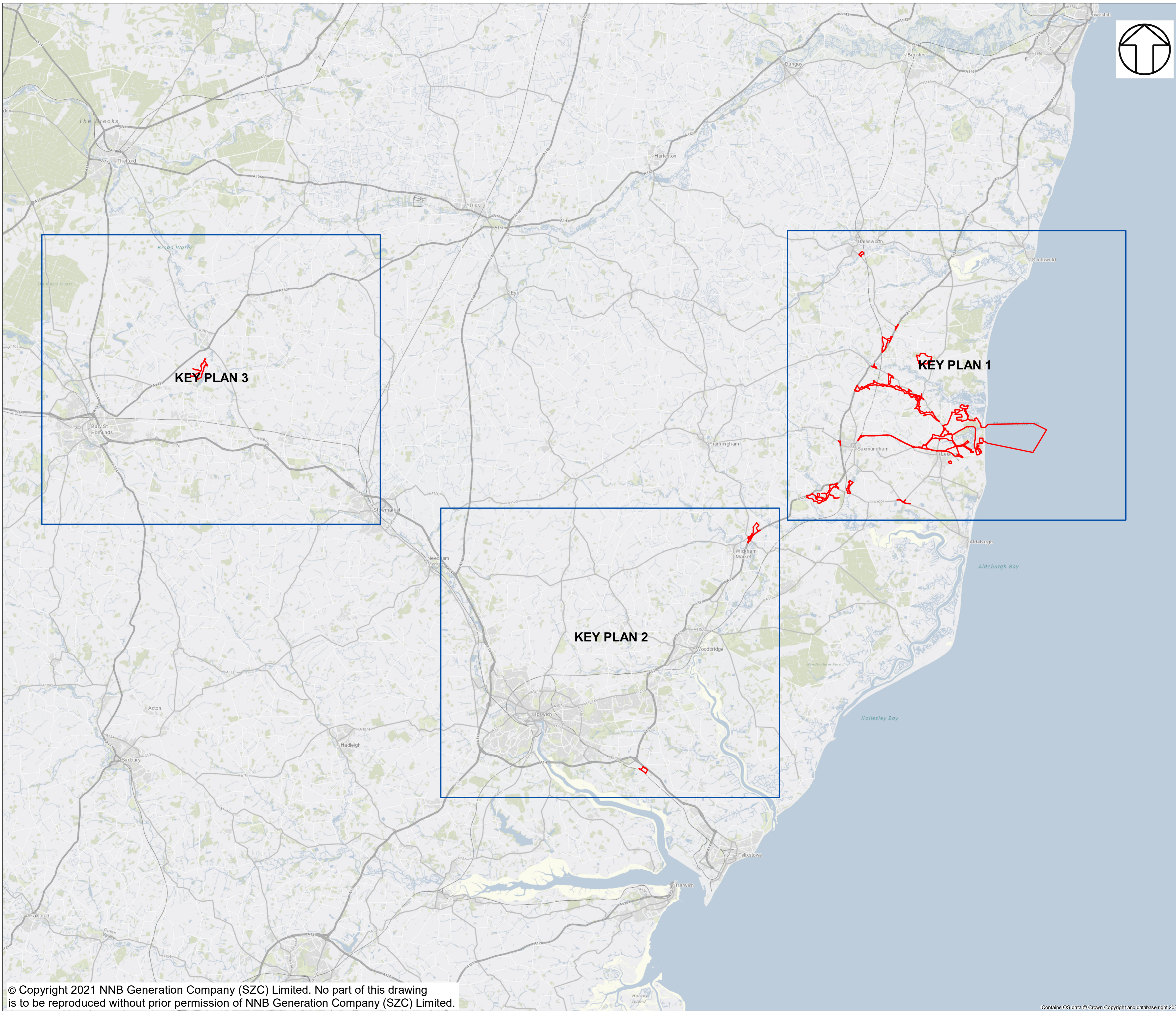
Drawing Number	Revision	Drawing Title	Scale	Sheet Size
Works Plans – Part 3				
SZC-SZ0204-XX-000-DRW-100250	02	Northern Park and Ride Works Plans - Sheet 15 of 28	1:2500	A1
SZC-SZ0204-XX-000-DRW-100251	02	Southern Park And Ride Works Plans - Sheet 16 of 28	1:2500	A1
SZC-SZ0204-XX-000-DRW-100252	02	Two Village Bypass Works Plans - Sheet 17 of 28	1:2500	A1
SZC-SZ0204-XX-000-DRW-100462	02	Two Village Bypass Works Plans - Sheet 18 of 28	1:2500	A1
SZC-SZ0204-XX-000-DRW-100253	02	Sizewell Link Road Works Plans - Sheet 19 of 28	1:2500	A1
SZC-SZ0204-XX-000-DRW-100254	02	Sizewell Link Road Works Plans - Sheet 20 of 28	1:2500	A1
SZC-SZ0204-XX-000-DRW-100255	02	Sizewell Link Road Works Plans - Sheet 21 of 28	1:2500	A1
SZC-SZ0204-XX-000-DRW-100484	02	Sizewell Link Road Works Plans - Sheet 22 of 28	1:2500	A1
SZC-SZ0204-XX-000-DRW-100261	02	Freight Management Facility Works Plan Sheet 23 of 28	1:1250	A1
SZC-SZ0204-XX-000-DRW-100256	02	Yoxford Roundabout Works Plan- Sheet 24 of 28	1:1250	A1
SZC-SZ0204-XX-000-DRW-100260	02	A12 / B1119 Junction at Saxmundham Works Plans - Sheet 25 of 28	1:1250	A1
SZC-SZ0204-XX-000-DRW-100258	02	A1094 / B1069 Junction South Of Knodishall Works Plans - Sheet 26 of 28	1:1250	A1
SZC-SZ0204-XX-000-DRW-100259	02	A12 / A144 Junction South Of Bramfield Works Plans - Sheet 27 of 28	1:1250	A1
SZ/WP/18	01	Fen Meadow - Pakenham Works Plans - Sheet 28 of 28	1:5000	A1

Works Plans For Approval – Revisions Schedule

Drawing Number	Revision	Drawing Title	Amendments
Works Plans Part 1			
SZC-SZ0204-XX-000-DRW-100479	02	Works Plans Overview	Reflect updates to Order Limits
SZC-SZ0204-XX-000-DRW-100480	02	Works Plans Key Plan 1	Reflect updates to Order Limits
SZC-SZ0204-XX-000-DRW-100481	02	Works Plans Key Plan 2	Reflect updates to Order Limits
SZC-SZ0204-XX-000-DRW-100514	01	Works Plans Key Plan 3	Reflect updates to Order Limits
Works Plans Part 2			
SZ/WP/01	02	Main Development Site & Rail Works Plans - Key Plan 3	Reflect updates to Order Limits
SZ/WP/02	02	Main Development Site & Rail Works Plans - Key Plan 4	Reflect updates to Order Limits
SZ/WP/03	02	Main Development Site & Rail Works Plans - Sheet 1 of 28	Update sheet number to out of 28
SZ/WP/04	02	Main Development Site & Rail Works Plans - Sheet 2 of 28	Update sheet number to out of 28
SZ/WP/05	02	Main Development Site & Rail Works Plans - Sheet 3 of 28	Reduction/increase to Order Limits
SZ/WP/06	02	Main Development Site & Rail Works Plans - Sheet 4 of 28	Reduction to Order Limits
SZ/WP/07	02	Main Development Site & Rail Works Plans - Sheet 5 of 28	Reduction to Order Limits
SZ/WP/08	02	Main Development Site & Rail Works Plans - Sheet 6 of 28	Update sheet number to out of 28
SZ/WP/09	02	Main Development Site & Rail Works Plans - Sheet 7 of 28	Reduction to Order Limits
SZ/WP/10	02	Main Development Site & Rail Works Plans - Sheet 8 of 28	Reduction/increase to Order Limits
SZ/WP/12	02	Main Development Site & Rail Works Plans - Sheet 9 of 28	Update sheet number to out of 28
SZ/WP/13	02	Main Development Site & Rail Works Plans - Sheet 10 of 28	Update sheet number to out of 28
SZ/WP/14	02	Sports Facilities Works Plans - Sheet 11 of 28	Update sheet number to out of 28
SZ/WP/15	02	Fen Meadow - Halesworth Works Plans - Sheet 12 of 28	Increase to Order Limits
SZ/WP/16	02	Fen Meadow - Benhall Works Plans - Sheet 13 of 28	Increase to Order Limits
SZ/WP/17	02	Marsh Harrier Habitat Works Plans - Sheet 14 of 28	Increase to Order Limits

Works Plans For Approval – Revisions Schedule

Drawing Number	Revision	Drawing Title	Amendments
Works Plans Part 3			
SZC-SZ0204-XX-000-DRW-100250	02	Northern Park and Ride Works Plans - Sheet 15 of 28	Reduction to Order Limits
SZC-SZ0204-XX-000-DRW-100251	02	Southern Park And Ride Works Plans - Sheet 16 of 28	Reduction to Order Limits
SZC-SZ0204-XX-000-DRW-100252	02	Two Village Bypass Works Plans - Sheet 17 of 28	Increase to Order Limits
SZC-SZ0204-XX-000-DRW-100462	02	Two Village Bypass Works Plans - Sheet 18 of 28	Increase to Order Limits
SZC-SZ0204-XX-000-DRW-100253	02	Sizewell Link Road Works Plans - Sheet 19 of 28	Increase to Order Limits
SZC-SZ0204-XX-000-DRW-100254	02	Sizewell Link Road Works Plans - Sheet 20 of 28	Increase to Order Limits
SZC-SZ0204-XX-000-DRW-100255	02	Sizewell Link Road Works Plans - Sheet 21 of 28	Increase/reduction to Order Limits
SZC-SZ0204-XX-000-DRW-100484	02	Sizewell Link Road Works Plans - Sheet 22 of 28	Increase/reduction to Order Limits
SZC-SZ0204-XX-000-DRW-100261	02	Freight Management Facility Works Plan Sheet 23 of 28	Update sheet number to out of 28
SZC-SZ0204-XX-000-DRW-100256	02	Yoxford Roundabout Works Plan- Sheet 24 of 28	Reduction to Order Limits
SZC-SZ0204-XX-000-DRW-100260	02	A12 / B1119 Junction at Saxmundham Works Plans - Sheet 25 of 28	Reduction to Order Limits
SZC-SZ0204-XX-000-DRW-100258	02	A1094 / B1069 Junction South Of Knodishall Works Plans - Sheet 26 of 28	Reduction to Order Limits
SZC-SZ0204-XX-000-DRW-100259	02	A12 / A144 Junction South Of Bramfield Works Plans - Sheet 27 of 28	Update sheet number to out of 28
SZ/WP/18	01	Fen Meadow - Pakenham Works Plans - Sheet 28 of 28	New Scheme



NOTES

KEY

- Order Limits
- Sheet Layout

02	JAN 2021	MS	HA	Proposed changes to the DCO Application - January 2021	SZC Co
01	MAR 2020	JA	HA	DCO Submission	SZC Co
REVISION	DATE	DRAWN	CHECKED	REASONS FOR REVISION / COMMENTS	APPROVED

NOT PROTECTIVELY MARKED

COPYRIGHT
 Reproduced from Ordnance Survey map with the permission of Ordnance Survey on behalf of the controller of Her Majesty's Stationery Office © Crown Copyright (2021). All Rights reserved. NNB GenCo 0100060408.



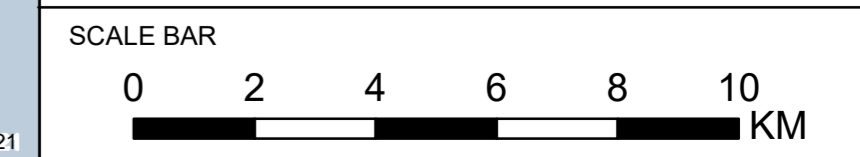
PROJECT:
SIZEWELL C

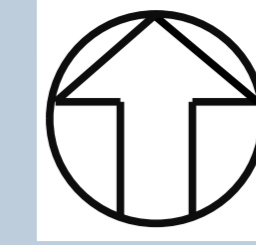
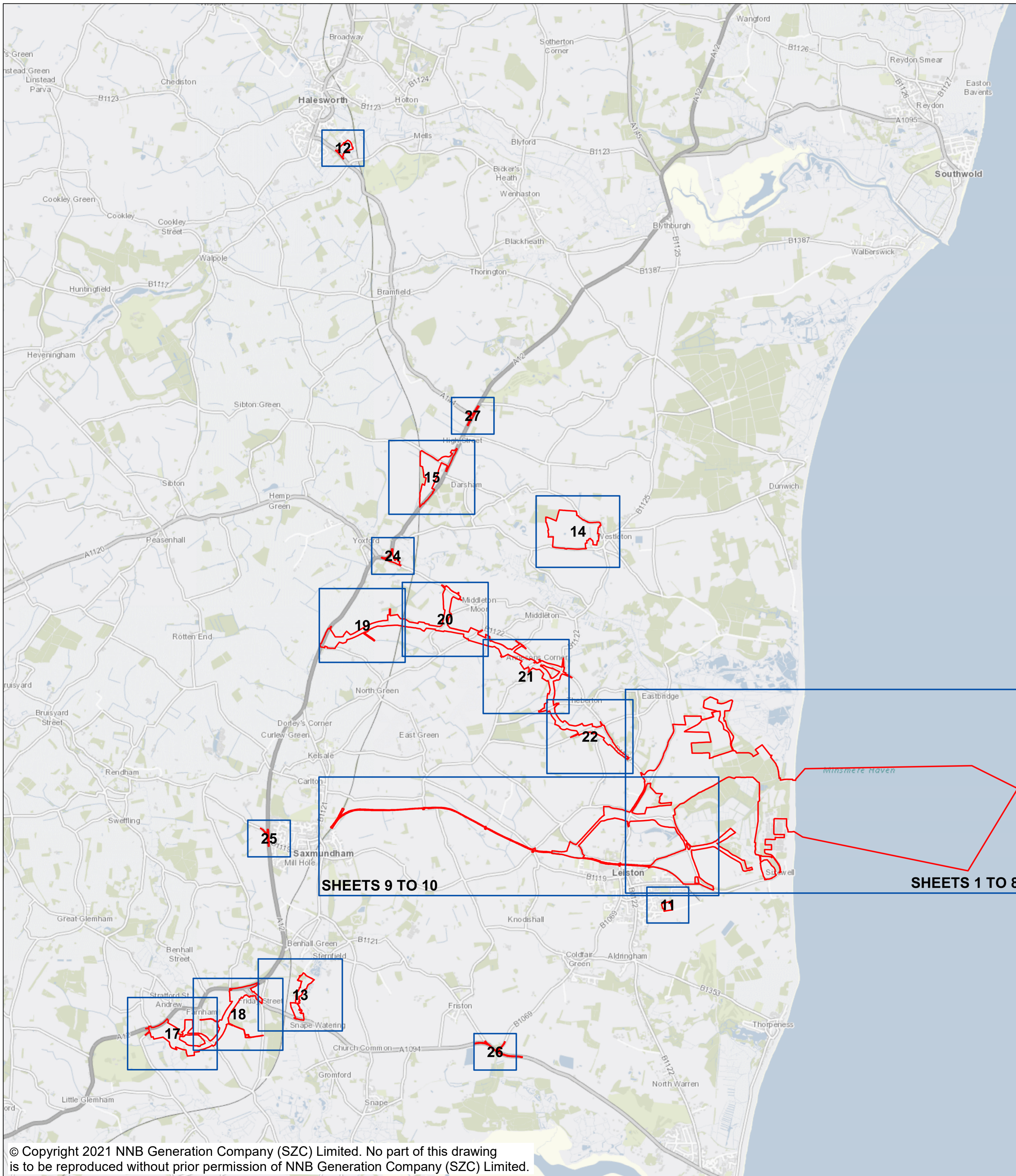
DOCUMENT:
 WORKS PLANS
 REGULATION 5(2)(j)

DRAWING TITLE:
 WORKS PLANS
 KEY PLAN OVERVIEW

DRAWING NO:
SZC-SZ0204-XX-000-DRW-100479 REVISION:
02

DATE:
JAN 2021 DRAWN:
MS SCALE:
1:125,000 @A1





NOTES

KEY

- Order Limits
- Sheet Layout

02	JAN 2021	MS	HA	Proposed changes to the DCO Application - January 2021	SZC Co
01	MAR 2020	JA	HA	DCO Submission	SZC Co
REVISION	DATE	DRAWN	CHECKED	REASONS FOR REVISION / COMMENTS	APPROVED

NOT PROTECTIVELY MARKED

COPYRIGHT
 Reproduced from Ordnance Survey map with the permission of Ordnance Survey on behalf of the controller of Her Majesty's Stationery Office © Crown Copyright (2021). All Rights reserved. NNB GenCo 0100060408.



PROJECT:
 SIZEWELL C

DOCUMENT:
 WORKS PLANS
 REGULATION 5(2)(j)

DRAWING TITLE:
 WORKS PLANS
 KEY PLAN 1

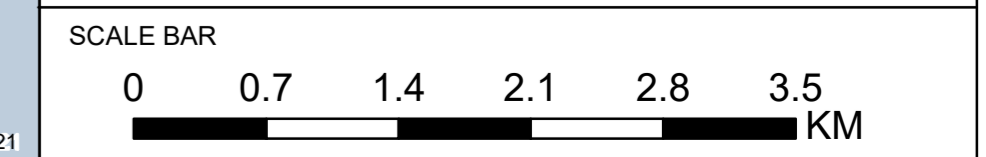
DRAWING NO:
 SZC-SZ0204-XX-000-DRW-100480

REVISION:
 02

DATE:
 JAN 2021

DRAWN:
 MS

SCALE:
 1:40,000 @A1





NOTES

KEY

- Order Limits
- Sheet Layout

02	JAN 2021	MS	HA	Proposed changes to the DCO Application - January 2021	SZC Co
01	MAR 2020	JA	HA	DCO Submission	SZC Co
REVISION	DATE	DRAWN	CHECKED	REASONS FOR REVISION / COMMENTS	APPROVED

NOT PROTECTIVELY MARKED

COPYRIGHT
 Reproduced from Ordnance Survey map with the permission of Ordnance Survey on behalf of the controller of Her Majesty's Stationary Office © Crown Copyright (2021). All Rights reserved. NNB GenCo 0100060408.



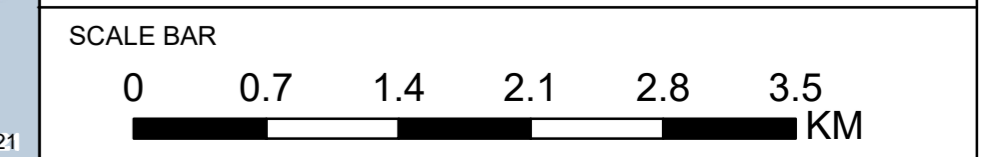
PROJECT:
 SIZEWELL C

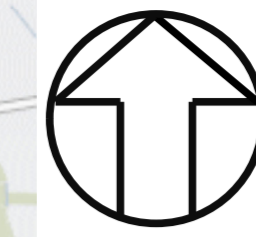
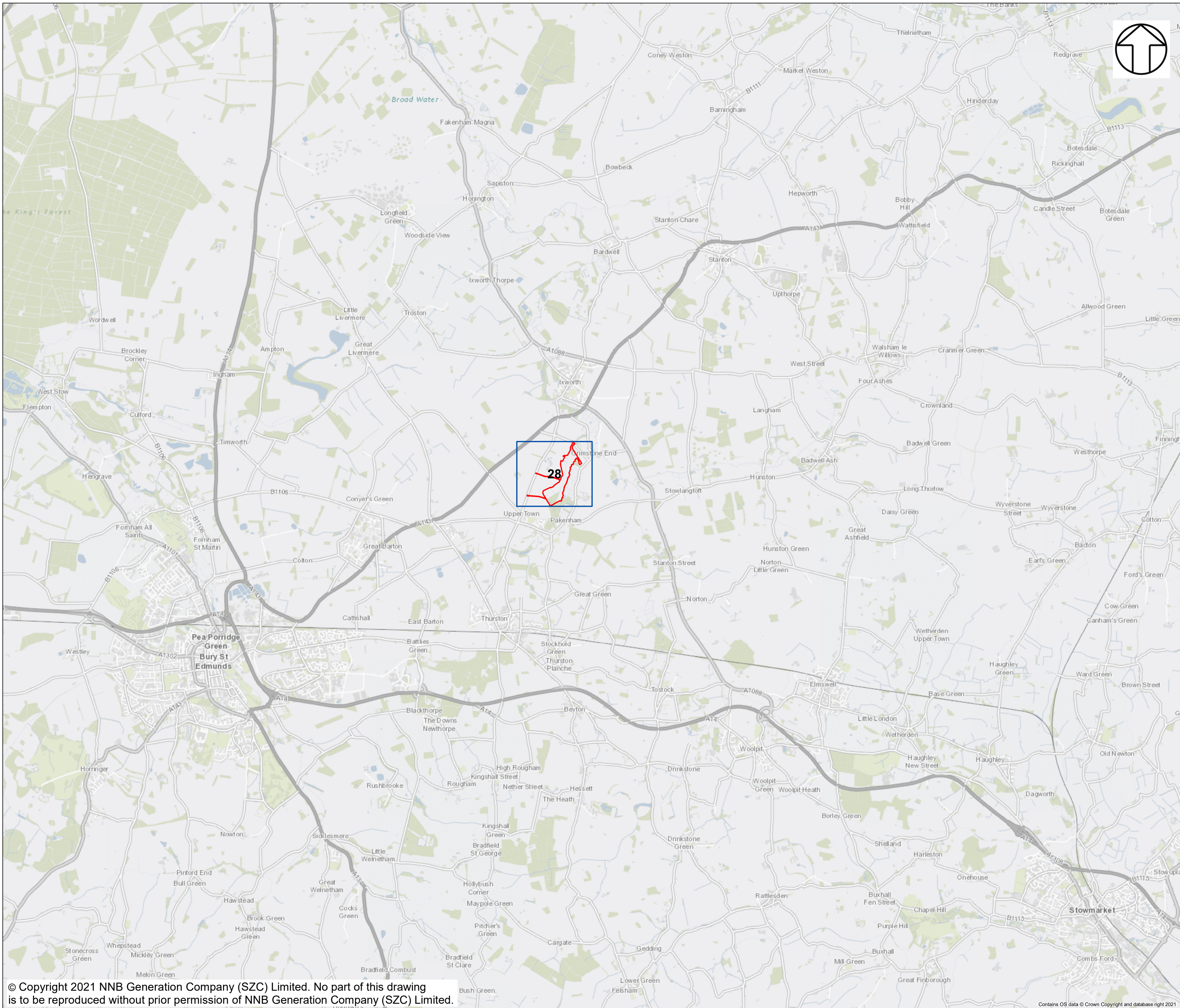
DOCUMENT:
 WORKS PLANS
 REGULATION 5(2)(j)

DRAWING TITLE:
 WORKS PLANS
 KEY PLAN 2

DRAWING NO: SZC-SZ0204-XX-000-DRW-100481 **REVISION:** 02

DATE: JAN 2021 **DRAWN:** MS **SCALE:** 1:40,000 @A1





NOTES

KEY

- Order Limits
- Sheet Layout

01	JAN 2021	MS	HA	Proposed changes to the DCO Application - January 2021	SZC Co
REVISION	DATE	DRAWN	CHECKED	REASONS FOR REVISION / COMMENTS	APPROVED

NOT PROTECTIVELY MARKED

COPYRIGHT
 Reproduced from Ordnance Survey map with the permission of Ordnance Survey on behalf of the controller of Her Majesty's Stationery Office © Crown Copyright (2021). All Rights reserved. NNB GenCo 0100060408.



PROJECT:
 SIZEWELL C

DOCUMENT:
 WORKS PLANS
 REGULATION 5(2)(j)

DRAWING TITLE:
 WORKS PLANS
 KEY PLAN 3

DRAWING NO: SZC-SZ0204-XX-000-DRW-100514 **REVISION:** 01

DATE: JAN 2021 **DRAWN:** MS **SCALE:** 1:40,000 @A1

